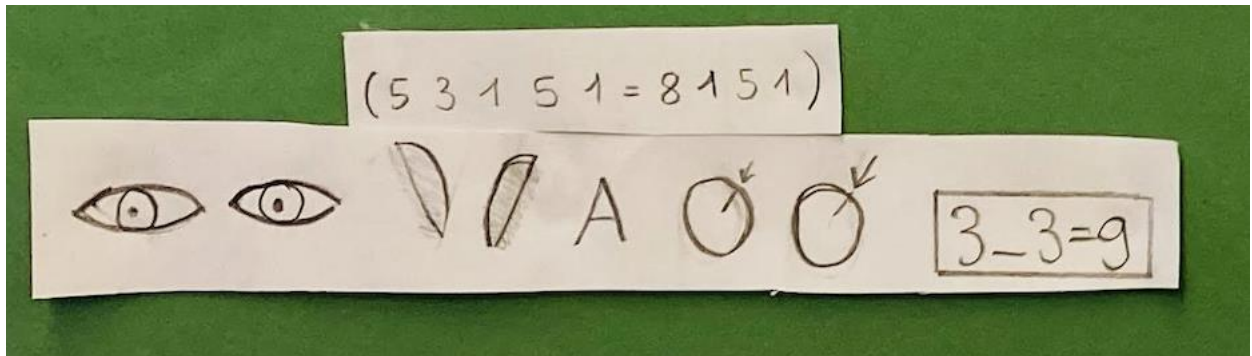
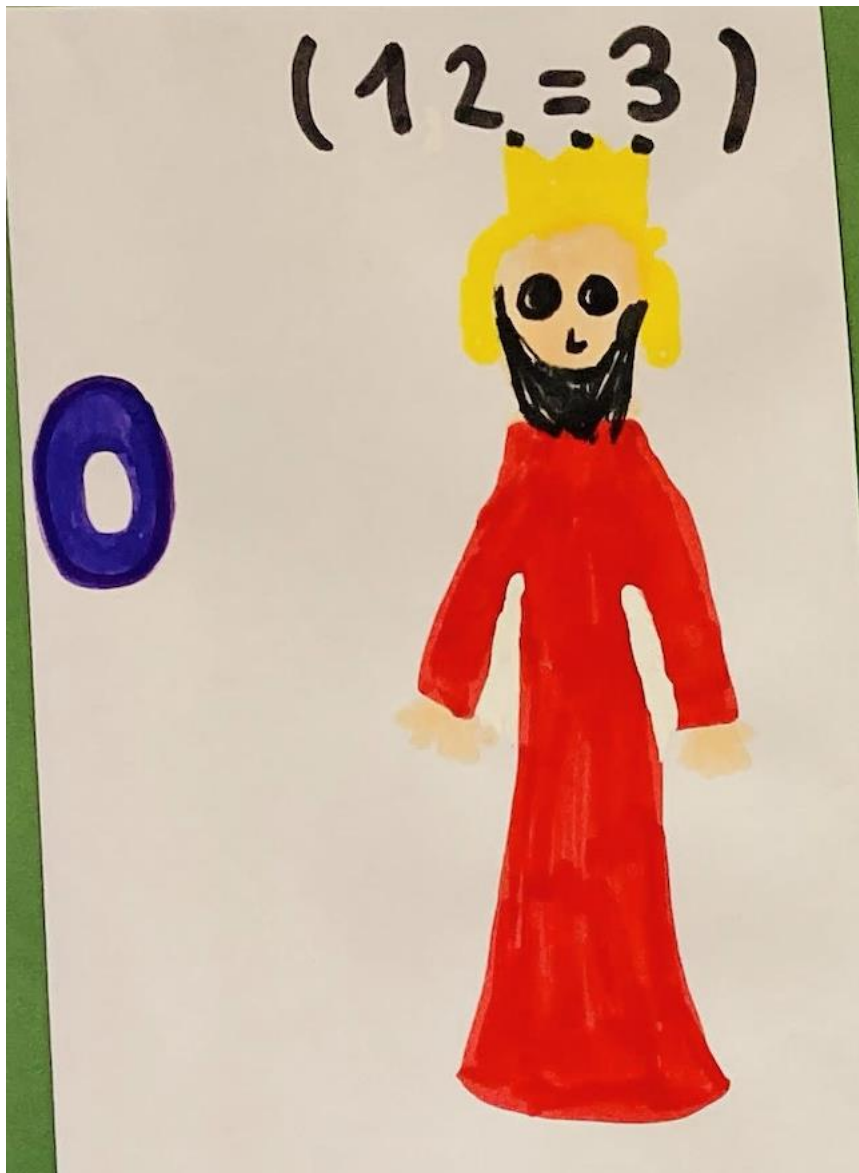


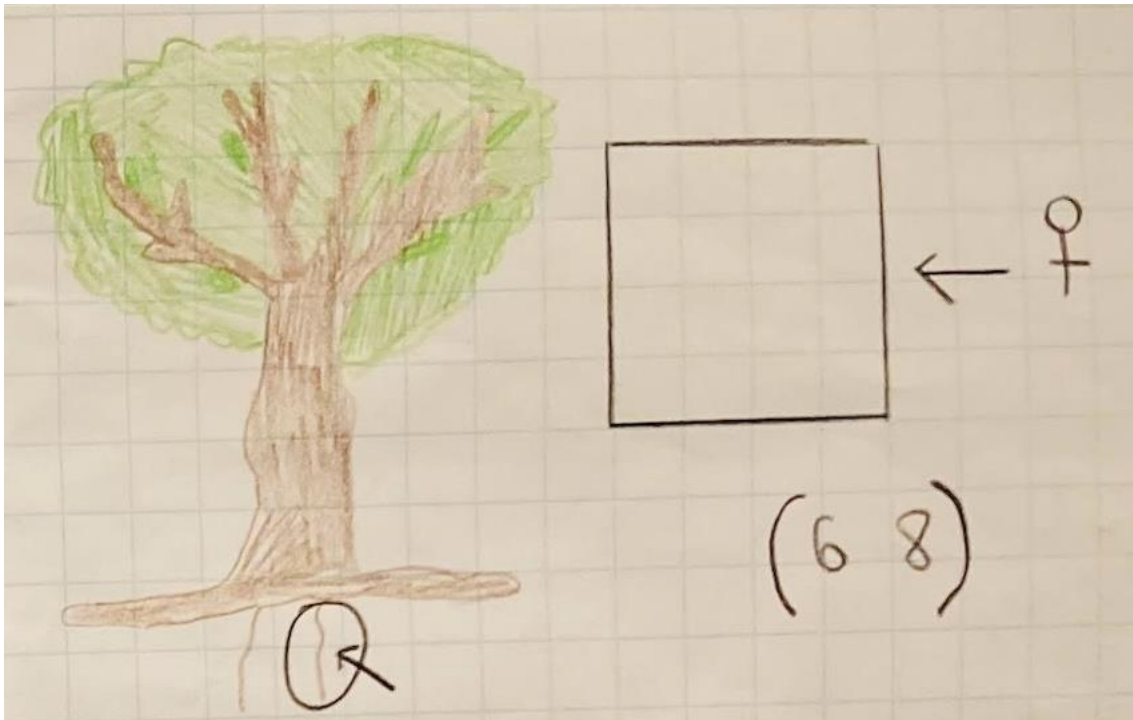
5A RIVA SAN VITALE – DOCENTE JOELLE ANSERMIN



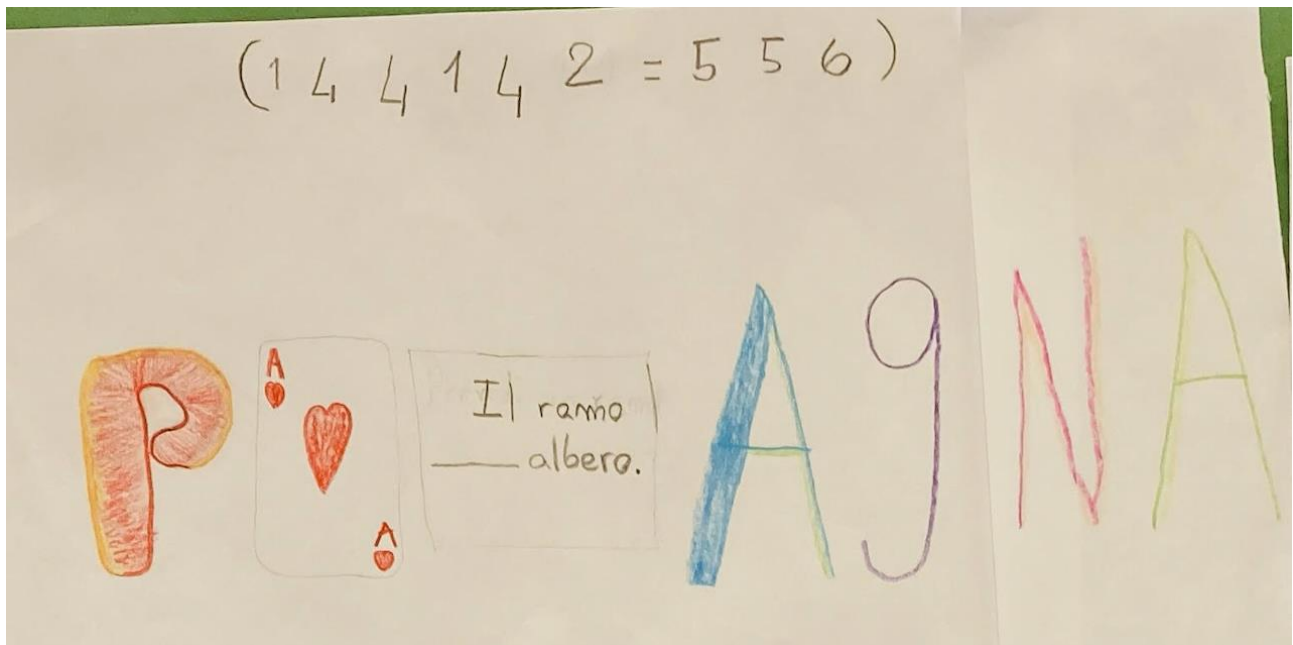
SOLUZIONE: OCCHIALI A RAGGI X



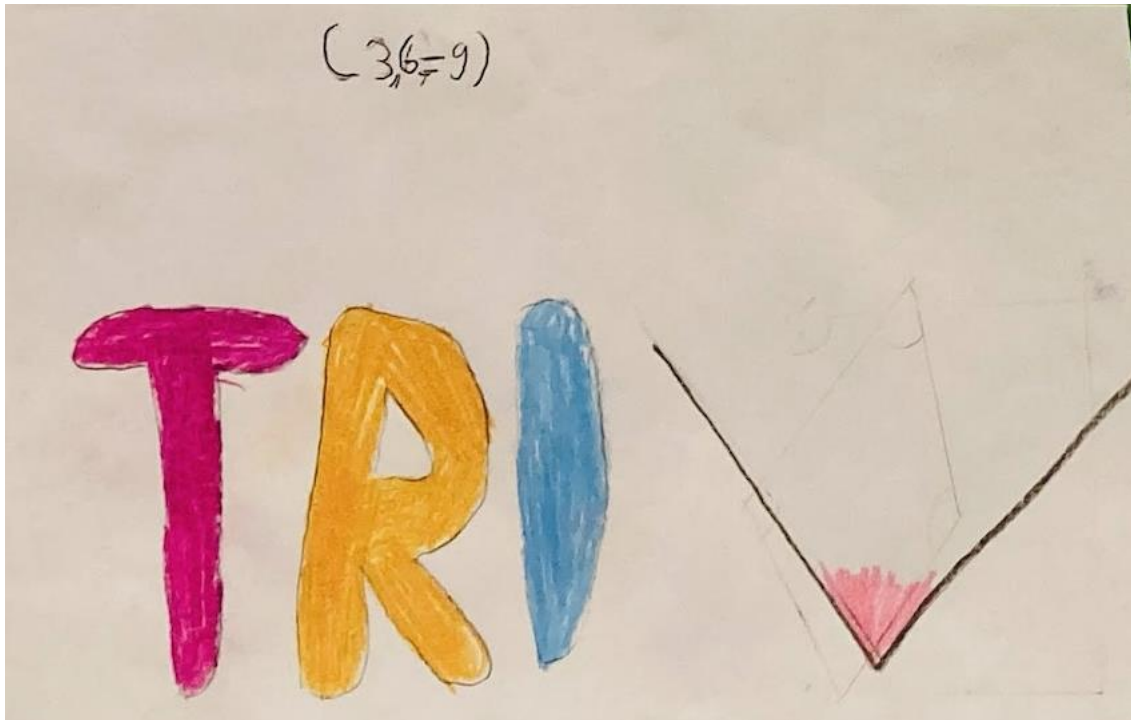
SOLUZIONE: ORE



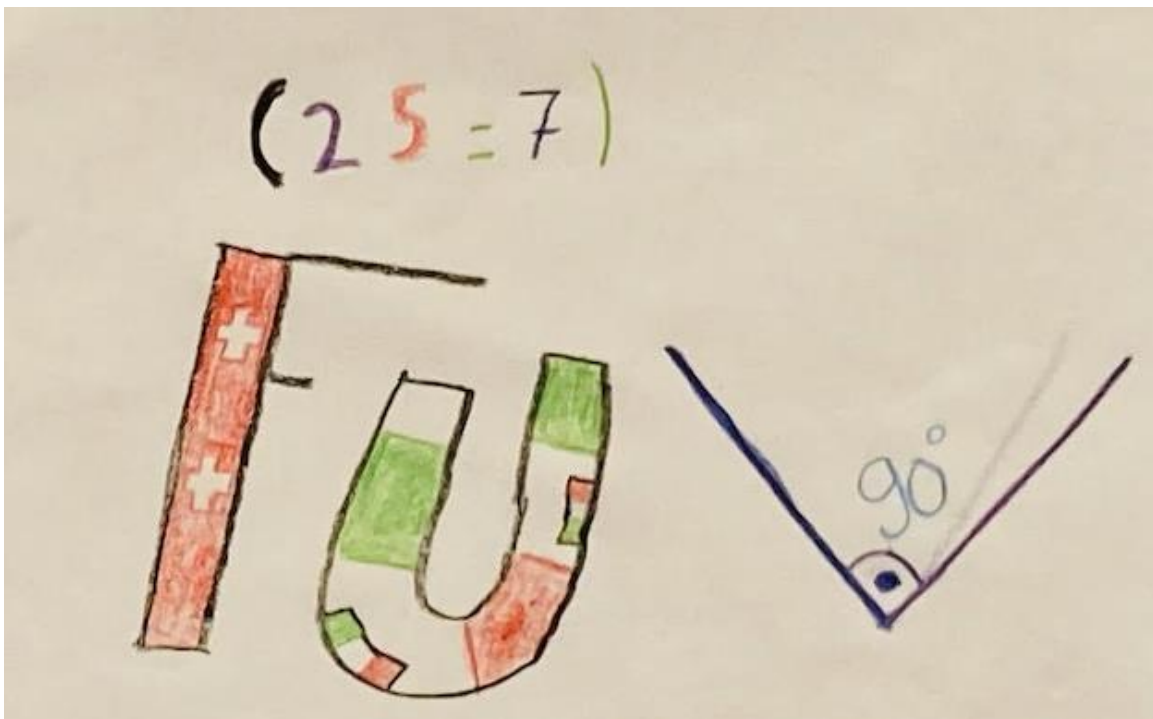
SOLUZIONE: RADICE QUADRATA



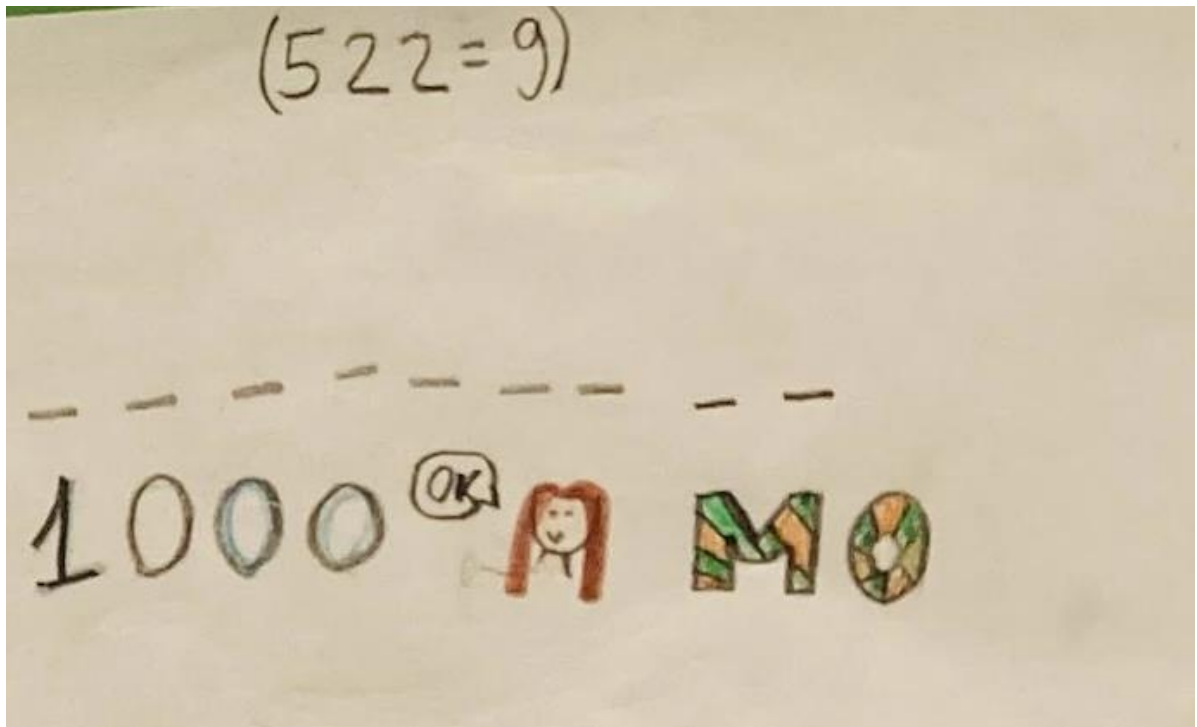
SOLUZIONE: PASSO DELLA NOVENA



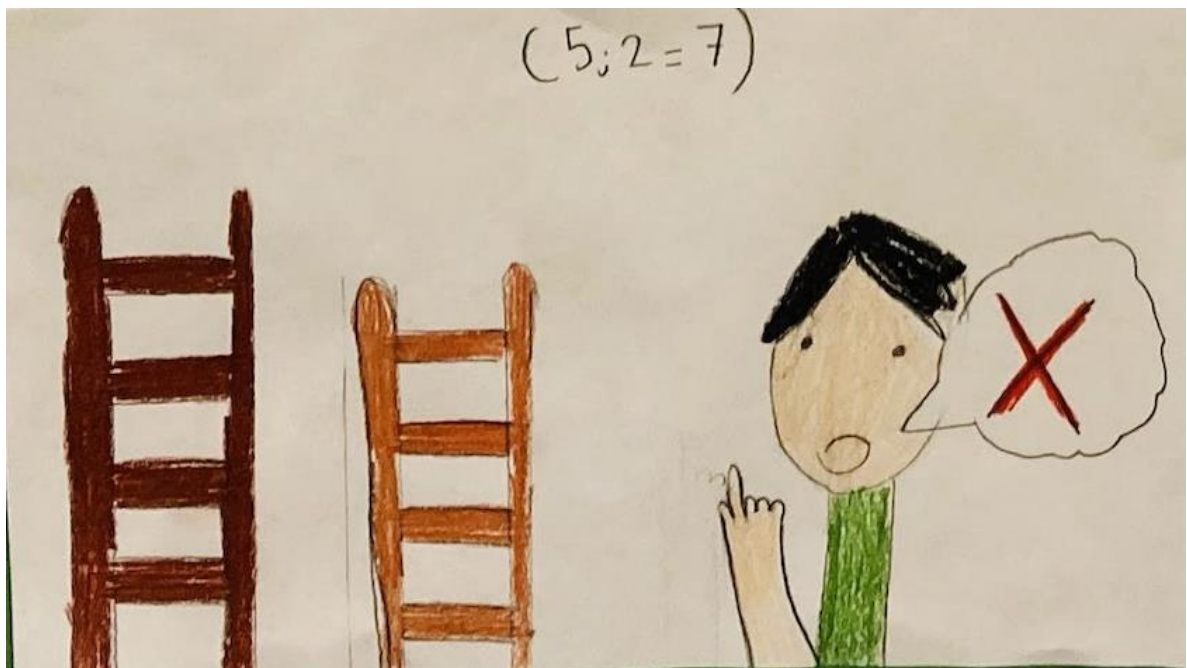
SOLUZIONE: TRIANGOLO



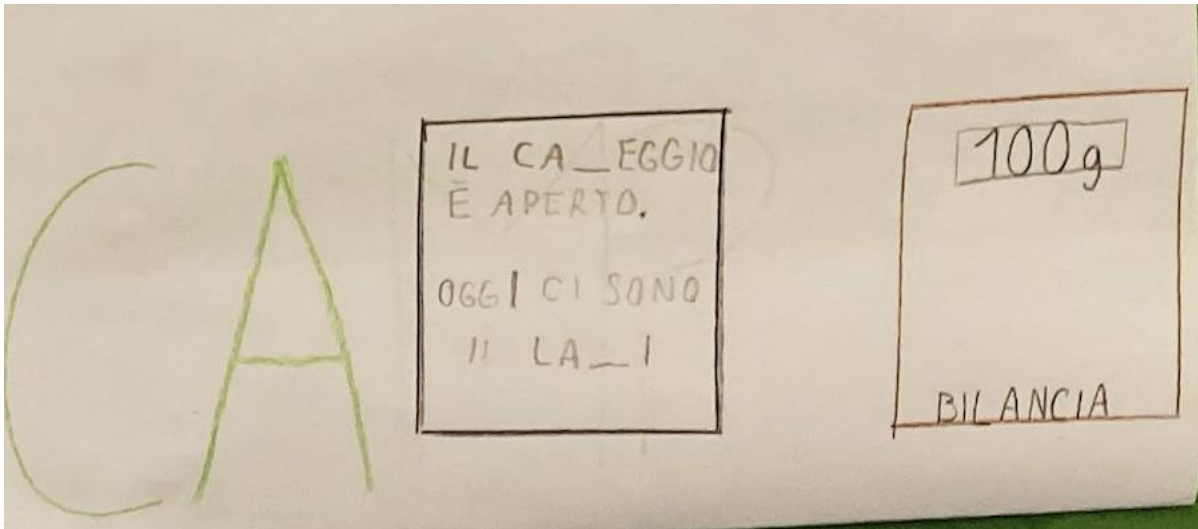
SOLUZIONE: FURETTO



SOLUZIONE: MILLESIMO



SOLUZIONE: SCALENO



SOLUZIONE: CAMPETTO